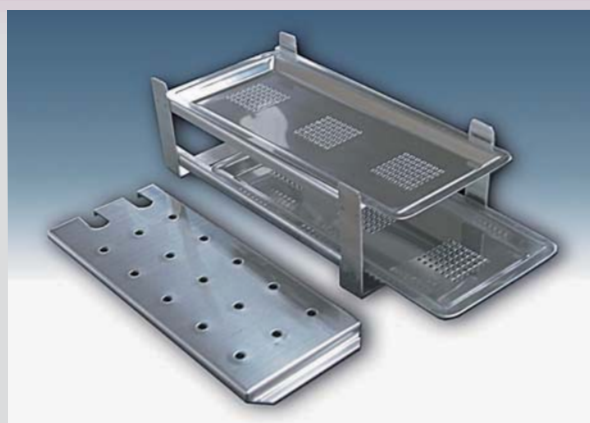


Elite Fuji

High Pressure Sterilizer

MODEL : EAC-1500

Small table-top high pressure steam sterilizer



Standard accessories. "Stainless tray set"

Feature of EAC-1500

- Suitable for sterilizing small amount of device. The chamber size is 150mm (Diam) x 270mm (Depth). The chamber capacity is 4.76 Liter.
- Compact and light-weight, these are easy to carry and can be installed even where space are limited.
- It applies an analogue controlling system. Sterilizing and drying should be switched manually.
- Set up the switch of control panel is in the operation mode to start the operation.
- Simple and easy handling of operation panel.
- Feed water into the chamber through the water supply, set the timer and fasten the door handle to start the operation.

Specification of EAC-1500

Capacity and size of chamber	4.76 L / 150 mm (Diam) x 270 mm (Depth)	Door type	Fastened and loosened by a handle
Material of chamber	Stainless steel SUS 304 L	Outside dimensions (W x D x H mm)	340 x 355 (460) x 290 (Including handle)
Temperature setting range	132 °C, only	Weight	13.2 Kg
System control	Analogue controlling system	Required space (W x D mm)	370 x 460
Install program	Standard (medical equipment) sterilizing program	Water tank capacity	Built-in, 1.0 L
Operation mode	Sterilizing only / Drying only, Switchable*2	Water feeding	Manual water supply with water supply valve
Drying system	Heater heating drying	Power supply / Power consumption	AC 220 V 50 Hz Single-phase / 750 VA
Heater capacity	AC 220 V / 750 W	Standard accessories	1 Rack, 2 Trays, 1 Heater guard and Operation Manual, Warranty card.
Safety function	Pressure safety valve, Pressure safety system, Circuit breaker.	Safety standard	IEC60601-1-2:2014

*1 EAC-1500 cannot be used continually. When the first operation is completed, wait for 15 minutes to restart the next operation.

*2 The EAC-1500 is only sterilization and drying modes. It is necessary to make settings according to the work content.

*3 Depth includes with the door handle (460 mm).

⚠ Cautions for safety use:

- Be sure to read through the operation manual in prior to start using.
- The machine should be used correctly. Otherwise, troubles, accidents or short life of machine may be caused.